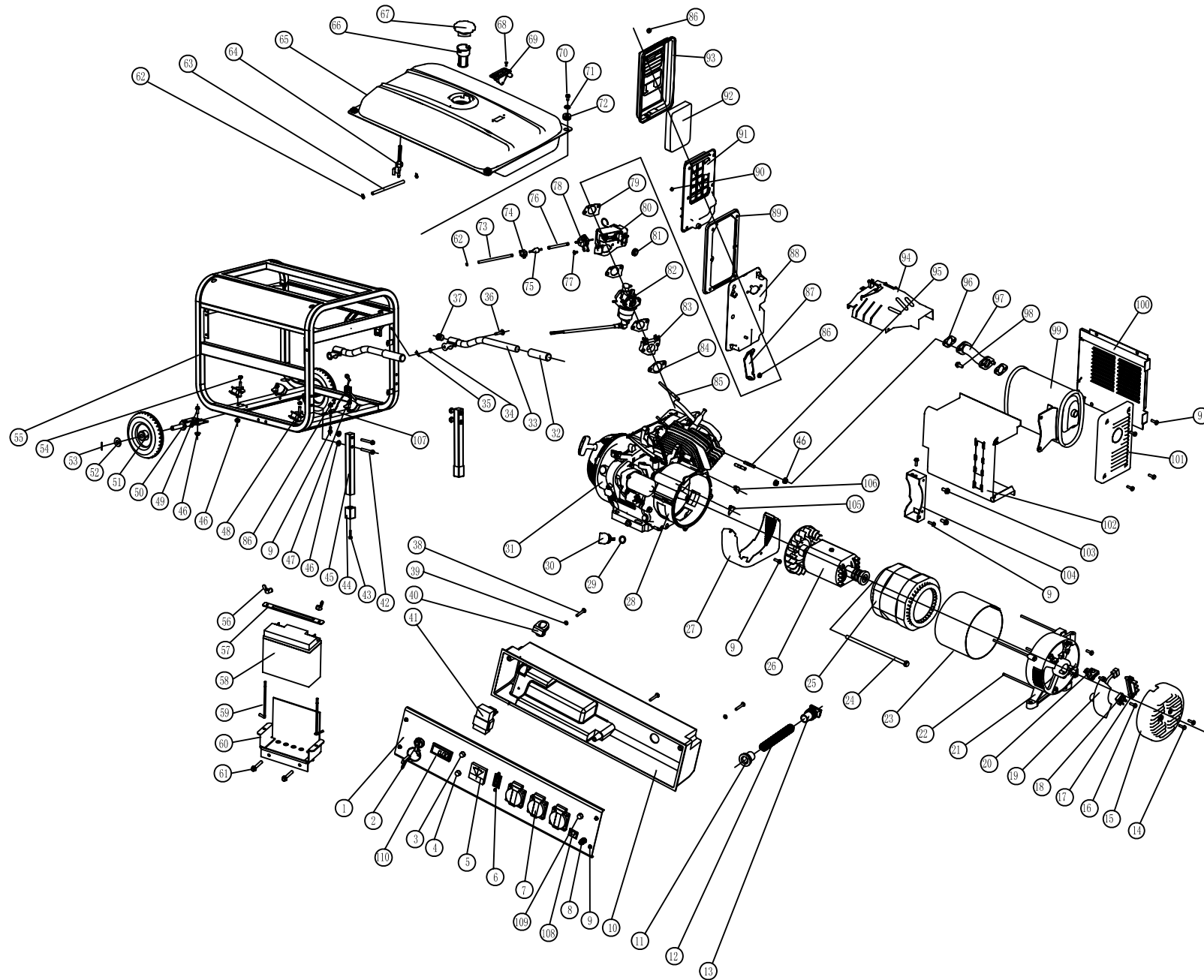


7800/M/E2



Ref.	Part No.	Description	Ref.	Part No.	Description
1	SF188FD-1710000	Control panel	59	SF188FD-1700203-C	Hook bolt M6
2	SF02FD-1151205A	Electric starting switch	60	SF188FD-1700200-C	Battery support
3	SF02FD-1151201A	AC indicator lamp	61	GB5789-86	Screw M8×50
4	SF02FD-1151207D	Oil alarm lamp	62	SF160F-1070001	Fuel hose clip
5	SF02FD-1151204A	Voltmeter	63	SF188FD-1160002	Fuel hose
6	SF05FD-1151202	A.C circuit breaker	64	SF168FD-1160400	Fuel cock
7	SF02FD-1151203	Receptacle	65	SF188FD-1160001	Fuel tank
8	GB5781-86	Screw M6×22	66	SF168F-1160500	Fuel filter
9	GB5789-86	Screw M6×12	67	SF168FD-1160200	Fuel tank cap
10	SF05FD-1151207A	Control box	68	GB819-85	Screw M5×6
11	SF02FD-1151201	Wiring rubber bush	69	SF168FD-1160100	Fuel meter
12	SF05FD-1151209C	Wiring prot. hose	70	GB5789-86	Screw M6×25
13	SF05FD-1170003-B	Wiring rubber bush	71	GB5287-86	Washer Φ6
14	GB5789-86	Screw M5×10	72	SF188FD-1160300-C	Rubber bush
15	SF05FD-1152002	Rear cover	73	SF188FD-1131001	Rubber hose
16	GB5789-86	Screw M6×10	74	SF188FD-1131015	Clip
17	SF168F-1152032	Terminal	75	SF188FD-1131100	One-way valve
18	SF168F-1152004A	Bridge rectifier	76	SF188FD-1131002	Rubber hose
19	SF05FD-1152031A	AVR	77	GB818-85	Screw M5×10
20	SF05FD-1152035	Alternator brush	78	SF188FD-1031200	Diaphragm valve assembly
21	SF05FD-1152032	Alternator rear frame	79	SF188FD-1130002	Air cleaner gasket
22	GB5789-86	Screw M6×179	80	SF188FD-1131000	Choke assembly
23	SF05FD-1152001	Stator protector	81	SF188F-1020001	Rubber bush
24	GB5787-88	Screw M10×1.25×265	82	SF188FD-1133000	carburetor
25	SF05FD-1152020	Stator	83	SF188FD-1134000	Carburetor connector
26	SF05FD-1152010	Rotor	84	SF188FD-1130003	Connector gasket
27	SF05FD-1151600	Alternator air outlet	85	SF188FD-1010002	Intake bolt
28	SF188FD-1030011	Crankcase cover	86	GB6177-86	Nut M6
29	SF160F-1030004	O-ring oil seal	81	SF188F-1020001	Rubber bush
30	SF188F-1030003	Oil gauge	82	SF188FD-1133000	carburetor
31	SF188FD-100000E	Engine	83	SF188FD-1134000	Carburetor connector
32	C	Handle sleeve	84	SF188FD-1130003	Connector gasket
33	SF188FD-1151104I	Handle	85	SF188FD-1010002	Intake bolt
34	SF188F-1110005	Flat washer	86	GB6177-86	Nut M6
35	SF188F-1110007	Cotter pin	87	SF188FD-1090006	Air cleaner support
36	SF188FD-1151102I	Pin	88	SF188FD-1090100	Air cleaner rear seat
37	SF188FD-1151105I	Handle plug	89	SF188FD-1090002	Air cleaner seal
38	GB822-88	Screw M6×40	90	GB6177-86	Nut M5
39	GB97.1-85	Washer Φ6	91	SF188FD-1090003	Separating plate
40	SF05FD-1151206	Rubber bush	92	SF188FD-1090004	Air cleaner element
41	SF05FD-1719000	Diode	93	SF188FD-1090200	Air cleaner cover
42	GB5789-86	Screw M8×68	94	SF188FD-1080200	Air shroud
43	GB5789-86	Screw M6×29	95	SF188FD-1010001	Exhaust bolt
44	SF168FD-1151104F	Vibration absorber	96	SF188FD-1100001	Exhaust gasket
45	SF188FD-1151103I	Supporter	97	SF188FD-1100100	Exhaust pipe
46	GB6177-86	Nut M8	98	GB5781-86	Screw M8×25
47	SF05FD-1151300A	Vibration absorber 1	99	SF188FD-1100002	Muffler
48	SF05FD-1151300B	Vibration absorber 2	100	SF188FD-1100105	Muffler outer protector
49	GB5789-86	Screw M8×20	101	SF188FD-1100104	Muffler side protector
50	SF188FD-1151108G	Axle	102	SF188FD-1100103	Muffler inner protector
51	SF188FD-1151109G	Wheel	103	GB5789-86	Screw M8×20
52	GB97.1-85 φ14	Flat washer	104	SF188FD-1100005	Muffler support
53	GB/T91-2000	Cotter Pin	105	SF05-1201100A	Stopples
54	GB6177-86	Nut M10	106	SF05-1201100B	Stopples
55	SF188FD-1151101I	Steel frame assembly	107	SF168FD-11511013G	connecting wire
56	GB62-88	Butterfly nut M6	108	SF168FD-1710004A	DC socket
57	SF188FD-1700210-C	Battery fixing plate	109	SF02FD-1151202A-R	DC circuit breaker
58	FM12180	Battery	110	SF168FD-1710007	Running time counter